



“Be a Friend”

ROTARY DISTRICT 1210



Annual Conference

SOUTHPORT

14th-16th October 1994



Contents

2. *Conference Information.*
3. *Welcome from D.G. Ivor Rees.*
4. *Message from R.I. President Bill Huntley.*
5. *Message from R.I.B.I. President David Morgan.*
6. *R.I. Representative David Neumann.*
7. *R.I.B.I. Representative Hugh Gregory.*
8. *His Worshipful The Mayor of the Metropolitan Borough of Sefton.*
9. *Inner Wheel Chairman and Rotaract Chairman.*
10. *Helen Sharman.*
11. *Freddie Davis.*
12. *Angus Taverner.*
13. *Russ Abbot.*
14. *Syd Lawrence Orchestra.*
15. *Rhos Orpheus Male Voice Choir.*
16. *Message from D.G.N. Ron Lucas.*
- 17-19. *Conference Programme.*
- 20-30. *List of Registrations.*
31. *Conference Officials.*

CONFERENCE INFORMATION

CONFERENCE HEADQUARTERS

The Prince of Wales Hotel, Lord Street (Tel. 01704 536688) where members of the headquarters party and conference officers can be contacted.

CONFERENCE SESSIONS

All sessions will be held in the Floral Theatre and will start promptly. Delegates arriving late at sessions may be denied entry.

SOCIAL EVENTS

Friday evening — The "Nursery Rhymes" Fancy Dress Dance. Floral Hall, Restaurant and Disco Bar.

Saturday evening — Gala Variety show in the Floral Theatre. Admission strictly by ticket only.
Dress: Dinner Jackets.

TRANSPORT

Prior to the social events on Friday and Saturday evenings, coaches will collect delegates from their hotels, beginning at 8.00 p.m. on both evenings. Coaches will be available for return journeys at the close of each event.

BADGES

All delegates are required to wear their Conference Badges at all times. Members of the H.Q. party and other District Officers may be identified by blue ribbons attached to their badges, Club Presidents by gold and Stewards and Conference Officers by red.

JEWELS OF OFFICE

Past and present should be worn at all times.

MEDICAL OFFICERS

Rtn. Dr. Ted Hothersall (Stoke). Balmoral Lodge (01704 530751)

Rtn. Dr. Fraser Dukes (Wolverhampton). Prince of Wales (01704) 536688

Rtn. Dr. Simon Walford (Wolverhampton). Bold (01704) 532578

Rtn. Dr. Roger Longbotham (Rugeley). Ambassador (01704) 543998

Rtn. Dr. Murli Ahuja (Endon & Stockton Brook). Prince of Wales (01704) 536688.

Welcome to Southport '94



WE look forward to a weekend of fun and fellowship with friends old and new.

We extend a specially warm welcome to our distinguished guests — David and Lea Neumann, Hugh and Christabel Gregory, Sybil and Colin Ford and Troy Allen.

Conference Chairman, John Shaw, and his team have worked hard to present a programme which we hope will be enjoyed by everyone.

Conference is an excellent time for us all to get to know each other better and I hope everyone will take advantage of the opportunity.

As we say in the Black Country — have a "bostin" weekend and, please, to everyone you meet — BE A FRIEND.

Enjoy yourself,

IVOR REES,
District Governor.



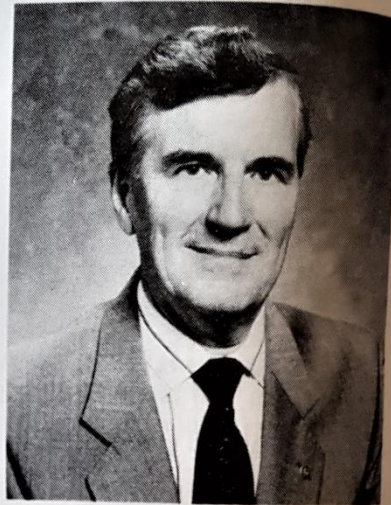
ROTARY
INTERNATIONAL
IN GREAT BRITAIN AND IRELAND

Bill Huntley

President of Rotary International in G.B. & I. 1994-95

TO all Rotarians and Guests attending the 1210 District Conference, AUDREY and I send warm greetings to everyone attending the 1994-95 District Conference. We know that you will enjoy a few special days of heart-warming Rotary fellowship. You will make new friends, and expand your Rotary horizons through shared experiences as you meet together.

In its ninety years of service to mankind Rotary has never stopped its advance in discovering new methods of serving the Community, and helping those in need. Here at this conference the organisers have put together a comprehensive programme of learning and entertainment, fun and fellowship.



Make sure that you take full advantage of all these opportunities.

It is impossible for Audrey and me to visit all the conferences, and so I have invited an enthusiastic Rotary leader to represent me at your conference. Please welcome Chairman, Publications Committee, David Neumann and his partner Lea, as our personal representatives. David is an extremely knowledgeable Rotarian, and enthusiastic leader, and a warm, friendly person. Please make every effort to meet them and to enjoy their company.

I can also express my great appreciation for the dedication and commitment of your District Governor Ivor. His leadership, which is repeated in every district in the Rotary world, is showing us all how to **BE A FRIEND** in every way.

Audrey and I hope everyone enjoys the conference, and returns home inspired and enthused to continue our service to humanity.

Your friend,

BILL

Bill Huntley (President).

PRESIDENT OF R.I.B.I. 1994-95
DAVID MORGAN



THE District Conference is a very special occasion — the showpiece of district enterprise and fellowship and I deeply regret that I am unable to be with you at what I am sure will be an exciting and enjoyable time.

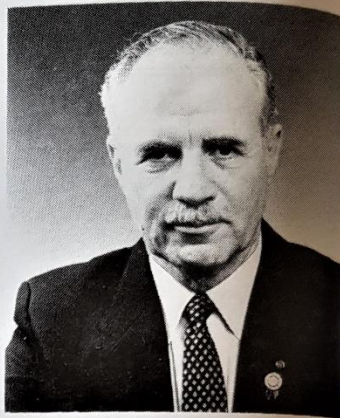
However, I am delighted that Immediate Past President Hugh Gregory and Christabel have accepted my personal invitation to represent Mary and myself at your Conference and they will be pleased to convey our sincere wishes for a thoroughly uplifting and memorable weekend. Do enjoy yourselves as you participate in the various activities arranged by District Governor Ivor and the Conference organisers and use the occasion to renew old friendships and to make new ones.

As you know, the emphasis this year is on Rotary at work in The Community — Rotarians using their time, their talent and their vocational skills to help the youth, the sick and elderly folk of our communities both at home and abroad. Please use the occasion to discover new ways of providing such assistance and take away with you not just the memories of the good times which I hope you will enjoy but also a new commitment to **“BE A FRIEND”** to such people.

DAVID MORGAN,
President RIBI.

Representing the President of Rotary International
DAVID NEUMANN
Chairman, Publications Committee

David is the spokesman and Director of Personnel Training at the Central Bureau of Statistics (attached to Israel's Prime Minister's Office). He graduated from the Hebrew University of Jerusalem in Political Science and International Relations as well as Public Administration. David is a member and officer of several local organisations.



David has been a member of the Rotary Club of Jerusalem West since its foundation in 1964-65 and served R.I. twice as District Governor — in 1979-80 and 1990-91. He also served as member of Rotary Volunteers Task Force (1992-93), member of R.I. Publications Committee (1993-96) and has been appointed Chairman of the Publications Committee for 1994-95. David also serves as his district's Rotary Foundation Chairman and Chairman of the Paul Harris Forest Association.

David served as the first Chairman of the Israel-Germany Inter-Country Committee (1979-1980).

David has attended a considerable number of International Rotary meetings (institutes, goodwill conferences, assemblies, conventions, etc.).

Spouse: Lea

Lea has retired as Deputy National Supervisor for Public Health Nursing at the Ministry of Health in Jerusalem. Lea graduated the Tel-HaShomer Hospital's Nursing School and attended the Hebrew University in Jerusalem and the Tel Aviv University. She has worked several years as a nurse in hospital and community nursing before she joined the senior staff of the Ministry of Health.

Lea has been a member of the Jerusalem Inner Wheel Club since its foundation almost 15 years ago.

Representing the President of R.I.B.I.
HUGH GREGORY
President of R.I.B.I. 1993/94



HUGH has spent his career in the communications industry. He graduated from Exeter University with an honours degree in physics and joined the BBC, where he worked in production, engineering and research departments in London.

He is a director of Gregory's Radio, a hi-fi, television and radio business which also specialises in public address and video equipment. He maintains his interest in broadcasting as a director of the Somerset independent radio station, Orchard FM.

Joining the Rotary Club of Wells in 1971, he was President in 1978/79. After holding various district offices he was Governor in 1986/87. He served two years as R.I.B.I. Community Service Chairman.

An enthusiastic supporter of the international aspects of Rotary, Hugh has attended most recent R.I. conventions. Rotary International appointments include presidential information adviser, functional literacy task force committee, vocational service committee, and special services support group.

Hugh is married to Christabel and they have a son and a daughter. In their spare time they both like nothing better than escaping to the coast to windsurf.



**His Worshipful The Mayor
of the
Metropolitan Borough of Sefton**
(Councillor Nicholas Fanning, J.P.)

COUNCILLOR Nicholas Fanning was born in Liverpool in 1922, and moved to Bootle with his wife Mary in 1954. They have a married son and daughter and four grandchildren.

He worked for a local aircraft company as a fitter at the outbreak of World War II, then served with the Royal Signals in Egypt and Palestine.

On release from H.M. Forces he volunteered to join the National Hospital Service Reserve and trained in home nursing skills at Walton Hospital. He returned to the aircraft company and spent the remainder of his career there until his retirement.

Public Life.

In 1966 Councillor Fanning was elected to serve Mersey Ward on Bootle C.B.C. He was a member of the following committees: Libraries & Arts, Housing, Highways, Education, Welfare (Chairman).

In 1974 he was elected to the Netherton Ward on Sefton M.B.C., where he served on the Planning, Education, Social Services and Housing Committees until 1979.

Councillor Fanning was re-elected to Church Ward, Waterloo, for the years 1979-1987 and then was elected to Netherton Ward in 1987, which he has served until the present time. He is currently a member of the following committees: Social Services (Chairman), Policy & Resources and Housing.

Councillor Fanning presently serves as Chairman on the following outside bodies: Merseyside Post Office Advisory Committee; Joint Finance Social Services and Health Authority; Governors, The Good Shepherd School; Old Roan Community Centre; Princess Royal Youth Club; Gordon Boys Youth Club.

He also serves on the following Committees: North-West Association of Social Service Authorities; Merseyside Valuation and Community Charge Tribunal.

Councillor Fanning has served as a Justice of the Peace for seventeen years.



**Chairman of Inner Wheel District 21
MRS. SYBIL FORD**

I WAS born in Cobridge, Stoke-on-Trent; moved to Kidsgrove as a teenager where I was educated and worked as a book-keeper.

Married Colin thirty-nine years ago and have one son, Adrian, and two grandsons.

Joined Blackfriars Inner Wheel Club as a Founder Member in 1976 and have been Secretary and President, serving District 21 as Treasurer and Extension Organiser.

My interests include gardening and crafts in general.

May I take this opportunity of wishing District Governor Ivor and all Rotarians of District 1210 a very happy and successful Conference.



**Chairman of Rotaract District 1210
TROY ALLEN**

I WAS born in Buxton, Derbyshire, in 1969 and moved to Cheshire, Lancashire and North Yorkshire before coming to the Midlands. I was educated at the Lancaster Royal Grammar School, where I took an active role in its Choral Societies. I moved down to the Midlands and became a Master Locksmith and also joined Rotaract. It was the ideal opportunity to create an active social life while doing some good for the local community. I joined Bilston Rotaract in 1987, where I took on several posts including President for the two year period 1990-1992. I have also taken on District Posts such as: District Conference Sergeant-At-Arms, West Midlands Zone Chairman and District Vice-Chairman.

I enjoy travelling up and down the country visiting friends I have made through Rotaract.

This will be the 5th consecutive District 1210 Rotary Conference that I have attended and I am very pleased to be here again.



HELEN SHARMAN

HELEN Sharman heard a radio advertisement while she was driving home from work and jotted down the phone number while waiting for some traffic lights to change. It was a moment that changed her life.

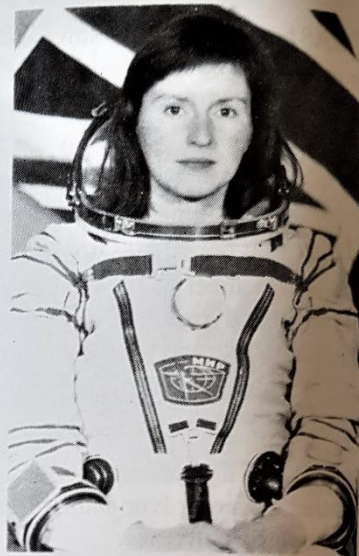
Project Juno was to be a Soviet space mission in which a UK cosmonaut would take part. When it was announced 13,000 people applied. To her astonishment, after an exhaustive series of physical and psychological tests, Helen Sharman was one of the final four candidates — and then one of two who were selected for cosmonaut training in the USSR.

There followed eighteen gruelling months preparing for weightlessness, learning how to deal with a landing in the sea, how to cope with the cramped environment of a space capsule — and all without knowing whether, in the end, she would be chosen.

But she was — and in May 1991, when the Juno Mission lifted off, Helen Sharman became the first Briton to go into space. The flight took her to the MIR space station, where she spent a week performing scientific experiments — and experiencing the unique feeling of being in space, travelling at over 18,000 m.p.h. and orbiting the earth up to sixteen times a day !

Helen Sharman was born in Sheffield in 1963 and went to both school and university there, graduating from university in 1984 with a B.Sc. in Chemistry. She worked as an engineer for a division of GEC and in 1987, whilst studying part-time for a Ph.D., she went to work as a research-technologist for Mars Confectionery Ltd.

Since Helen's return from space she has continued working as a scientist. She has become one of the country's leading ambassadors for science, conducting countless talks and lectures discussing her experiences. An accomplished broadcaster, Helen remains active in the promotion of science throughout the world. Helen Sharman was awarded the O.B.E. in 1992.



FREDDIE DAVIS



BORN just before the Second World War in Brixton, Freddie, the grandson of a music hall comedian, Jack Herbert, spent most of his childhood standing in the "wings" watching some of the greats do their act.

Now, the veteran of 26 stage pantomimes in theatres all over the United Kingdom, seasons at the famous London Palladium, plus hundreds of television and radio shows with a films and television commercials along the way.

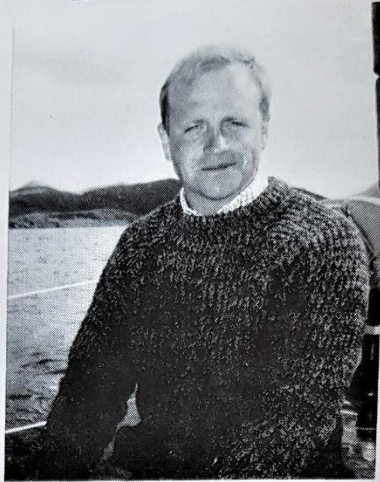
In more recent years, Freddie's exploits have taken him into theatrical management, producing over two hundred pantomimes and summer shows in the eighties.

In 1994 Freddie celebrates thirty-five years as a professional entertainer and is now pursuing a career in acting with featured roles in "The Rik Mayall Playhouse," "Heartbeat" and "All Quiet on the Preston Front".

Freddie has just completed a major feature film co-starring with one of his comedy idols Jerry Lewis in the Walt Disney financed "Funny Bones," directed by Peter Chelsom, whose recently acclaimed film "Hear My Song" received rave reviews worldwide. The film also features Oliver Reed, Richard Griffiths and Joanna Lumley.

Freddie is an accomplished after-dinner speaker and speaking engagements have taken him all over the world.

ANGUS TAVERNER



ANGUS Taverner is the Director of Fund-raising for the new British medical emergency relief charity — MERLIN. He has held this appointment for the past year prior to which he was a career Royal Artillery Officer, finishing in the rank of Major and having seen service in Germany, Belize, Northern Ireland and the U.K.

MERLIN was established nearly two years ago by a group of young British people who had worked with Medecins san Frontières and had the strong conviction that there was an urgent need for a similar sort of organisation in the UK. In a world in which man-made and natural disasters, and a growing plethora of wars dominate our headlines, this belief has been translated into a very practical and fast-growing organisation.

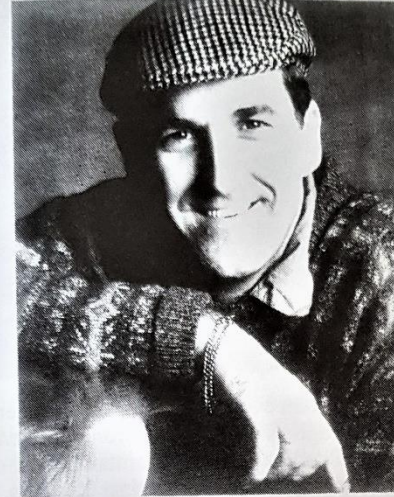
MERLIN'S role is to send doctors, nurses and all the logistical support and medical supplies necessary to cope with the first phase of an international emergency. This requires an immediate evaluation of the requirement, the rapid mobilisation of people and resources, and not inconsiderable financial support.

With a small, full-time core of professional staff based in London, MERLIN now has a database of some 200 volunteer doctors, nurses and logisticians. Over the past two years they have carried out programmes in Bosnia, Armenia, Azerbaijan, Georgia, Siberia and Rwanda.

Angus will explain in more detail how MERLIN came into being, why the time was right and, using examples of recent work, show how this new and exciting charity is already making a name for itself.

RUSS ABBOT

BRINGS BACK C-U JIMMY IN THE
RUSS ABBOT SHOW SET FOR AUTUMN TOUR



Russ Abbot will be recreating several of his TV "Madhouse" characters including "C-U-Jimmy", "Cooperman" and "Basildon Bond" when he returns to the stage for an autumn tour of "The Russ Abbot Show" which opens on October 14th at the Southport Theatre.

Before that, he will have completed filming on the *third* series of Granada's smash-hit drama "September Song", for which he has received high accolades from both the press and public alike. And — also from Granada — he will have been seen in a brand-new TV series of "The Russ Abbot Show" which starts on the ITV network on Monday, September 5th, and in which Russ introduces a variety of new characters for the first time.

Mike Hughes presents the stage version of "The Russ Abbot Show" in which Bella Emberg joins Russ in a series of hilarious sketches. Also in the company are Louise English, violin-virtuoso Gary Lovini, the fabulous Russettes, The Russ Abbot Dancers and The Russ Abbot Orchestra under the direction of Sean Whittle. The production is by Scenic Happenings with choreography by Chris Power.

THE SYD LAWRENCE ORCHESTRA



OVER the years, Syd Lawrence and his Orchestra has been Britain's premier big-band attraction. Although Syd has retired from the scene, the band, which is now directed by Bryan Pendleton, is still maintaining the exceptionally-high standards which have been built up over the last 25 years.

Syd's sound was a success from the word go. And no wonder, for Syd was once again extolling the musical virtues of the music of Glenn Miller; and almost everyone loved Miller-style music. In 1969 Granada Television filmed an outside broadcast of the band in action, at one of the hotels in which it was appearing, and the programme was shown on the ITV network. From that day on the band never looked back.

At that time Syd was still a member of the BBC Northern Dance Orchestra, but, after the television programme, Syd made the monumental decision to quit the NDO and take his band out on to the road on tour. It was a bold decision, but it paid off handsomely. Glenn Miller music, a la Syd Lawrence, was back in vogue and Syd has since been quoted as saying: "I was in the right place at the right time".

In 1970, the orchestra was established on a national footing as Syd and his musicians, month in and month out, travelled the length and breadth of Great Britain attracting huge audiences and generating tremendous interest in their music. There was even more success in the 1980's with tours to Canada, Switzerland, Germany, France, Sweden and Holland.

As an ex-pianist and arranger with the band for four years, from 1970, Bryan Pendleton was the obvious choice to take his place on stage, for this past association with the band gave him the knowledge and understanding of the musical policy which has been so successful over the years.

RHOS ORPHEUS MALE VOICE CHOIR AMBASSADORS OF SONG



THE Choir is known as one of Wales' premier ambassadors of song. Its sensitive interpretation of music allied to its warmth of tone has thrilled audiences all over the world.

In recent years the choir has toured West Germany (on three occasions) and also Norway, Sweden, Holland and Belgium. During its tour of Belgium, the choir sang at the Headquarters of the European Commission at Brussels.

The choir also holds the distinction of being the first group of entertainers from the Western World to tour China following the Revolution. The tour included a very prestigious visit to the world famous music conservatoire at Shanghai, where the choir held concerts.

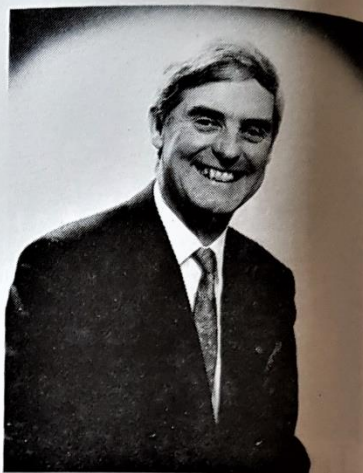
Not to be forgotten is the concert held at the Headquarters of the United Nations in New York as part of UN fortieth birthday celebrations. This concert was held during the tour of the Eastern Seaboard of the United States, which included visits to Boston, New York and Philadelphia. Following this tour the choir toured mid-western states which included visits to Chicago and Milwaukee, where the choir sang to an audience of over forty thousand people. 1990: tour of Canada; 1992: tour of Israel (with the Haifa Symphony Orchestra). Scheduled tours for 1995: Easter tour of Belgium and Germany; tour of South Africa.

At home the choir has sung at many notable venues, including the Royal Albert Hall; the St. David's Hall, Cardiff; The Free Trade Hall, Manchester; the Royal Philharmonic Hall, Liverpool; and the Victoria Hall, Stoke-on-Trent. The Orpheus has also given numerous performances at much smaller venues, often in aid of charity.

Many of the Choir's records and cassettes have been sold internationally. Its latest recordings are best sellers and are topping the sales charts. "Calm is the Sea" was recorded for the Royal National Lifeboat Institution, and has helped the Choir raise over £10,000 for that organisation. The latest Welsh record, "Ffeffrynnau Hen a Newydd" is a world-wide favourite.

**DISTRICT GOVERNOR NOMINEE 1995-96
RON LUCAS**

BORN and raised in Yorkshire, Ron came to Staffordshire in 1966. He is in practice as a Chartered Surveyor, specialising in property management and valuations and he is also a Chartered Arbitrator.



Ron is married to Cynthia and they have four children: Joanna, married to Guy, who together run their own Management Training Company; Philippa is a doctor in General Practice in Shrewsbury, and she is married to her New Zealand husband Kurt, who is in Dental Practice in Welshpool and Bishops Castle; Richard is a Chartered Surveyor and an Associate of an International Firm of Surveyors, working at their Madrid office since 1990. Their youngest daughter, Charlotte, has just returned from a "Gap Year" project teaching at a Mission School in Zimbabwe and she is now a first year Medical Student at Birmingham University. Joanna and Philippa have presented Ron and Cynthia with five grandchildren and they are very much into "grandparenting."

Apart from Rotary, Ron is a devotee of village life, being a former Parish Councillor, active in his Professional Society as a former Chairman of the North Staffordshire Branch of the Royal Institution of Chartered Surveyors, a Governor of Stoke-on-Trent College and, since 1980, a Member of the Finance Committee of the University of Keele. In 1993 Ron was elected to the Court of the University and in the early part of 1994 was elected to the University Council. He is also member of the Board of Trustees of North Staffordshire's New Victoria Theatre. An active Methodist most of his life, Ron has held many offices in the Church and has been a lay preacher for over 30 years.

For recreation Ron and Cynthia enjoy walking, gardening, photography and travel.

A Past President of the Rotary Club of Newcastle-under-Lyme, Ron's involvement at District level began in 1973 as a Member of the District Foundation Committee and in 1984 he became District Foundation Chairman followed by five years as District Secretary prior to becoming a District Vice-Chairman and subsequently District Governor Nominee.

Conference Programme



Friday, 14th October, 1994

Morning

- 9.10 a.m. Golf Competition at Hesketh Golf Club.
- 9.30 a.m. Bowls Competition at the Promenade Bowling Club, Victoria Park.

Afternoon

- 2.30 p.m. **FLORAL THEATRE**
Conference called to order.
Conference opened by Rotarian John Shaw, Conference Chairman.
The District Governor assumes Chairmanship.
Silent Invocation.
Civic Welcome by The Worshipful The Mayor of Sefton,
Councillor N. Fanning, J.P.
Rotary Welcome by Rotarian Ray Barton,
President of the Rotary Club of Southport Meols.
Message of Loyalty and Secretary's announcements.
The District Governor introduces the principal guests.
Address by the Representative of the President of Rotary International,
Rotarian David Neumann.
Short address by the District Governor.
Address by the Representative of the President of R.I.B.I.,
Rotarian Hugh Gregory.
Announcements by the Sergeant at Arms.
- 4.10 p.m. Conference adjourns.

Evening

- 8.30 p.m. **FLORAL HALL**
Fancy Dress Dance with the theme of "Nursery Rhymes" —
Dancing to the Syd Lawrence Orchestra.
Upstairs Lounge Bar — Dancing to the Paul Towers Discotheque.
Restaurant — quiet room bar where Charles will play the piano.
Buses will collect passengers from Hotels according to the timetable
supplied and return buses will be available at the conclusion of the
evening.

Saturday, 15th October, 1994

- Morning*
9.30 a.m. FLORAL THEATRE.
Conference reassembles.
Address by the Representative of the President of Rotary International,
Rotarian David Neumann.
Address by the Representative of the President of R.I.B.I.,
Rotarian Hugh Gregory.
- 10.30 a.m. Short break while seating for the platform party is rearranged.
Address by Helen Sharman — Astronaut.
Vote of Thanks by District Governor Nominee,
Rotarian Fraser Dukes.
Announcements by the Sergeant at Arms.
- 11.35 a.m. Conference adjourns.
Coffee and biscuits available for Rotarians and their partners and guests.
- 12.00 noon THE PRINCE OF WALES HOTEL.
The Windsor Suite — District Governor's Reception for
Club Presidents, Conference Guests, District Officers
and their partners.
- 1.00 p.m. Lunch in the Ballroom for all the District Governor's Guests.
- Afternoon*
2.45 p.m. FLORAL THEATRE.
Conference reassembles.
Address by District Governor Nominee Ron Lucas.
Address by Mr. Angus Tavener and Doctor Christopher Besse
on behalf of the Charity "Merlin".
Vote of Thanks by District Vice-Chairman Mike Law.
Presentation of District Awards by the District Governor.
Address by Mr. Freddie Davies, Past Prince Rat of
The Grand Order of Water Rats.
Vote of Thanks by District Community Chairman Keith Goode.
Announcements by the Sergeant at Arms.
- 4.30 p.m. Conference adjourns.
- Evening*
8.45 p.m. FLORAL THEATRE.
Gala Variety Performance, starring Russ Abbot.
Buses will collect passengers from their hotels according to the
timetable supplied. Buses will return delegates to their hotels
at the conclusion of the evening.

Sunday, 16th October, 1994

- Morning*
10.00 a.m. FLORAL THEATRE.
Service of Worship
led by the Rhos Orpheus Male Voice Choir.
- 11.00 a.m. Service concluded.
There will be a short break while the platform is reorganised.
- 11.15 a.m. Conference reassembles.
Address by District Rotaract Chairman Troy Allen.
Summing-up of the Conference
by the Representative of the President of Rotary International,
Rotarian David Neumann.
Summing-up of the Conference
by the Representative of the President of R.I.B.I.,
Rotarian Hugh Gregory.
Closing remarks and Vote of Thanks
by the District Governor.
Announcements by the Sergeant at Arms.
Conference closed by Conference Chairman,
Rotarian John Shaw.
- 12.15 p.m. Coffee and biscuits will be available in the Floral Hall.

LIST OF REGISTRATIONS

ROTARY CLUB OF ALBRIGHTON & DISTRICT

| | | | Hotel |
|-----------------------|-----------|---------|--------|
| Rtn. Richard Stockall | President | Lesley | Talbot |
| Rtn. David Bell | | Jessica | Talbot |
| Rtn. Richard Buttress | | Mary | Talbot |
| Rtn. Ian Fox | | Liz | Talbot |
| Rtn. Peter Leigh | | Hylida | Talbot |
| Rtn. Davinder Sangha | | Raj | Talbot |
| Rtn. Ray Vye | | Jean | Talbot |
| Rtn. Barry Woodward | | Barbara | Talbot |

ROTARY CLUB OF ALDRIDGE

| Rtn. Frank Reeves | President | Margaret | Radley |
|-----------------------|------------------|----------|-----------------|
| Rtn. Derek Birch | District Officer | Margaret | Prince of Wales |
| Rtn. Geoffrey Collins | | Doreen | Radley |
| Rtn. Bob Cooke | | Pat | Radley |
| Rtn. Brian Mayling | | Janet | Radley |
| Rtn. Henry Moon | | Lorraine | Radley |
| Rtn. John Rushton | | Helen | Radley |
| Rtn. Mike Smith | | Pauline | Radley |
| Rtn. Michael Taylor | | Barbara | Radley |
| Rtn. Tony Taylor | | Doris | Radley |
| Rtn. Brian Wheat | | June | Radley |

ROTARY CLUB OF AUDLEY

| Rtn. Granville Henshall | President | Mary | Gilton |
|-------------------------|-----------|----------|-----------------|
| Rtn. Jon Ball | | Hilary | Prince of Wales |
| Rtn. Gordon Champ | | Margaret | Gilton |
| Rtn. Robert Edwards | | Jennifer | Gilton |
| Rtn. Malcolm Griffiths | | Mary | Gilton |
| Rtn. Stan Holdway | | Doreen | Gilton |
| Rtn. Mike Jessop | | Wendy | Gilton |
| Rtn. Neville Langley | | Jean | Gilton |
| Rtn. Vaughan Pass | | Valerie | Gilton |
| Rtn. Philip Pickering | | Barbara | Gilton |
| Rtn. Derek Reah | | | Gilton |
| Rtn. Bryan Scarle | | | Gilton |
| Rtn. Roland Seymour | | | Gilton |
| Rtn. Deryck Swindells | | Nancy | Gilton |

ROTARY CLUB OF BILSTON

| Rtn. Len Turner | President | Thora | Richmond House |
|--------------------|-----------|---------|----------------|
| Rtn. Deb Bose | | Marilyn | Richmond House |
| Rtn. George Evans | | Sheila | Richmond House |
| Rtn. Douglas Fury | | Dorothy | Richmond House |
| Rtn. John Morfitt | | | Richmond House |
| Rtn. Derek Pyne | | Joan | Richmond House |
| Rtn. Gordon Smith | | Nora | Richmond House |
| Rtn. George Wilkes | | Hazel | Richmond House |

ROTARY CLUB OF BLACKFRIARS

| Rtn. Roy Hawkins | President | Barbara | Royal Clifton |
|----------------------|---------------------|----------|-----------------|
| Rtn. Roy Aslett | Sgt. at Arms | Anne | Prince of Wales |
| Rtn. Geoff. Clarke | | Patricia | Royal Clifton |
| Rtn. Edward Deakin | | Barbra | Royal Clifton |
| Rtn. Jack Dodd | | Anne | Royal Clifton |
| Rtn. Colin Ford | D.G.'s Guests | Sybil | Prince of Wales |
| Rtn. Noel Fryer | RIBI Vice-President | Anne | Prince of Wales |
| Rtn. John Hopley | | Maddy | Royal Clifton |
| Rtn. Rodney Smith | | Teresa | Royal Clifton |
| Rtn. Avinash Khunger | | Neelam | Royal Clifton |

ROTARY CLUB OF BLOXWICH

| Rtn. John Morgan | President | Lesley | Scarisbrick |
|------------------------|-------------------|----------|-----------------|
| Rtn. Bill Bailey | | Barbara | Scarisbrick |
| Rtn. Paul Bailey | | Kim | Scarisbrick |
| Rtn. Rob Boden | | Bev | Scarisbrick |
| Rtn. Jim Docherty | | Frances | Scarisbrick |
| Rtn. Jim Green | | Alyson | Scarisbrick |
| Rtn. Jack Grimshaw | | Joyce | Scarisbrick |
| Rtn. Deb Hunday | | Irene | Scarisbrick |
| Rtn. James Jones | | Kathleen | Scarisbrick |
| Rtn. Ivor Rees | District Governor | Marilyn | Prince of Wales |
| Rtn. Norman Richardson | | Mary | Scarisbrick |
| Rtn. Arnold Roe | | Flo | Scarisbrick |
| Rtn. Fred Rowley | | Muriel | Scarisbrick |
| Rtn. Bob Wootton | Chief Steward | Margaret | Scarisbrick |

ROTARY CLUB OF BLYTHE BRIDGE

| Rtn. Geoff Clay | President | Margaret | Prince of Wales |
|------------------------|--------------------|----------|-----------------|
| Rtn. David Ashley | | Adrienne | Prince of Wales |
| Rtn. Jeremy Billington | | Sue | Prince of Wales |
| Rtn. John Burton | | Dorothy | Prince of Wales |
| Rtn. Keith Houlston | Asst. Sgt. at Arms | Wendy | Prince of Wales |
| Rtn. Salvatore Lanza | | Patricia | Prince of Wales |
| Rtn. Stanley Leason | | Sandra | Prince of Wales |
| Rtn. Peter Nixon | | Barbara | Prince of Wales |
| Rtn. Michael Willis | | Cynthia | Prince of Wales |

ROTARY CLUB OF BREWOOD & DISTRICT

| Rtn. Cedric Grew | President | Enid | Metropole |
|----------------------|-----------|---------|-----------|
| Rtn. John Cook | | Ruth | Metropole |
| Rtn. Bob Drury | | Diane | Metropole |
| Rtn. Peter Clement | | Diane | Fairfield |
| Rtn. Norman Gibbins | | June | Fairfield |
| Rtn. Michael Hampson | | Sheila | Metropole |
| Rtn. Graham Handley | | Lynne | Fairfield |
| Rtn. Peter Henderson | | Janet | Metropole |
| Rtn. Henry Hughes | | Wendy | Metropole |
| Rtn. Bob Hunter | | Jean | Metropole |
| Rtn. Kevin Johnson | | Nina | Fairfield |
| Rtn. John Maynard | | Gwen | Metropole |
| Rtn. Brian Nixon | | Ann | Fairfield |
| Rtn. John Pegg | | Joyce | Metropole |
| Rtn. Peter Rushton | | Valerie | Metropole |

ROTARY CLUB OF BRIDGNORTH

| | | | |
|--------------------------|-----------|----------|----------|
| Rtn. Bob Walter | President | Pat | Stutelea |
| Rtn. Arthur Lucas | | Margaret | Private |
| Rtn. Robin Nettleton | | Lindsay | Stutelea |
| Rtn. Ken Owen | | Rosemay | Stutelea |
| Rtn. Stan Richards | | Sheila | Stutelea |
| Rtn. Bernard Whittingham | | Pauline | Stutelea |

ROTARY CLUB OF BROWNHILLS

| | | | |
|-----------------|--|----------|--------------|
| Rtn. Bob Downes | | Jennifer | CaravanPark |
| Rtn. Mac Gill | | Gillian | Caravan Park |

ROTARY CLUB OF BURNTWOOD & DISTRICT

| | | | |
|----------------------|-----------|-----------|----------|
| Rtn. John Freeman | President | Linda | Edendale |
| Rtn. Paul Cushen | | Hayley | Edendale |
| Rtn. John Dixon | | Gaynor | Edendale |
| Rtn. Norman Evans | | Rita | Edendale |
| Rtn. David Higgs | | Glenys | Edendale |
| Rtn. Les Hill | | Paula | Edendale |
| Rtn. Vince Kane | | Barbara | Edendale |
| Rtn. Scot Mitchell | | Christine | Edendale |
| Rtn. Geoff Painter | | Jill | Edendale |
| Rtn. Richard Poynton | | Dorothy | Edendale |
| Rtn. Graham Swinney | | Ann | Edendale |

ROTARY CLUB OF BURSLEM

| | | | |
|---------------------|-----------|----------|-------------|
| Rtn. Rowland Owens | President | Jan | Scarisbrick |
| Rtn. John Baggaley | | Jan | Scarisbrick |
| Rtn. Michael Bailey | | Sheila | Scarisbrick |
| Rtn. John Moss | | Thelma | Scarisbrick |
| Rtn. David Owens | | Rosalind | Scarisbrick |
| Rtn. Edmund Yorke | | Sylvia | Scarisbrick |

ROTARY CLUB OF CANNOCK

| | | | |
|-----------------------|-----------|----------|------|
| Rtn. John Knight | President | Gloria | Lake |
| Rtn. John Grimley | | Kathleen | Lake |
| Rtn. Tony Hulbert | | Mary | Lake |
| Rtn. Michael Mellor | | | Lake |
| Rtn. Melvyn Morgan | | Betty | Lake |
| Rtn. Michael Sutton | | Iris | Lake |
| Rtn. Jeffrey Williams | | Lynda | Lake |
| Rtn. Melvyn Wilton | | Veronica | Lake |
| Rtn. John Winter | | Gill | Lake |

ROTARY CLUB OF CHEADLE

| | | | |
|-----------------------|-----------|----------|--------------|
| Rtn. Rees Rogers | President | Carole | Berkeley |
| Rtn. Alan Chesters | | Joan | Berkeley |
| Rtn. Ken Horleston | | Freda | Berkeley |
| Rtn. Reg Moss | | Janet | Caravan Park |
| Rtn. John Mullington | | Pat | Berkeley |
| Rtn. Ivor Murray | | Sheila | Caravan Park |
| Rtn. Bill Sherratt | | Frances | Berkeley |
| Rtn. Harry Smith | | Beryl | Caravan Park |
| Rtn. Brian Standaloff | | Patricia | Berkeley |
| Rtn. Brian Stoddard | | Margaret | Berkeley |

ROTARY CLUB OF DARLASTON

| | | | |
|-----------------------|-----------|----------|----------------|
| Rtn. Alan Davies | President | Elaine | Balmoral Lodge |
| Rtn. John Bush | | Gwen | Balmoral Lodge |
| Rtn. Charles Crossman | | Win | Balmoral Lodge |
| Rtn. John Easthill | | Margaret | Balmoral Lodge |
| Rtn. Colin Forrest | | Pauline | Balmoral Lodge |
| Rtn. Vic Grainger | | Beryl | Balmoral Lodge |
| Rtn. Ted Phillips | | | Balmoral Lodge |
| Rtn. Fred Pitcher | | | Balmoral Lodge |

ROTARY CLUB OF DUDLEY

| | | | |
|----------------------|-----------|----------|-------------|
| Rtn. Fred Austin | President | Margaret | Scarisbrick |
| Rtn. Ray Glazzard | | | Scarisbrick |
| Rtn. Barrie Townsend | | Jackie | Scarisbrick |

ROTARY CLUB OF ELLESMERE

| | | | |
|-----------------------|--|----------|----------|
| Rtn. Jon Guyett | | Jackie | Penkelie |
| Rtn. Trevor Humphries | | Rosemary | Penkelie |
| Rtn. Bob McBride | | Barbara | Penkelie |
| Rtn. Reg Youd | | Holly | Penkelie |

ROTARY CLUB OF ENDON & STOCKTON BROOK

| | | | |
|--------------------|--|----------|-----------------|
| Rtn. Murli Ahuja | | Muriel | Prince of Wales |
| Rtn. John Bourne | | Janet | Dukes Folly |
| Rtn. Rees Davies | | Eileen | Prince of Wales |
| Rtn. Howell Jones | | June | Prince of Wales |
| Rtn. Robert Owen | | Cynthia | Dukes Folly |
| Rtn. Keith Powell | | Madelene | Dukes Folly |
| Rtn. Eric Whitmore | | Ellen | Prince of Wales |

ROTARY CLUB OF IRONBRIDGE

| | | | |
|---------------------|------------------|------|-----------------|
| Rtn. Rex Bolton | District Officer | | Prince of Wales |
| Rtn. Arthur Plimmer | | Anne | The Gables |

ROTARY CLUB OF KIDSGROVE

| | | | |
|-----------------------|-----------|-----------|---------------|
| Rtn. John Howe | President | Christine | Royal Clifton |
| Rtn. Norman Colclough | | Mary | Royal Clifton |
| Rtn. Barry Davies | | Denise | Royal Clifton |
| Rtn. Jack Gracey | | Helene | Royal Clifton |
| Rtn. Norman Leese | | Patricia | Royal Clifton |
| Rtn. Brian Mottram | | Valerie | Royal Clifton |
| Rtn. David Skellam | | Lesley | Royal Clifton |
| Rtn. David Tinsley | | Cynthia | Royal Clifton |

ROTARY CLUB OF LEEK

| | | | |
|----------------------|-----------|----------|-----------------|
| Rtn. Alwyn Hawkes | President | Joan | Prince of Wales |
| Rtn. Geoffrey Ball | | Rosemary | Prince of Wales |
| Rtn. Derek Goodacre | | Pat | Prince of Wales |
| Rtn. Tony Hague | | Anthea | Prince of Wales |
| Rtn. Roy Hewson | | Pamela | Prince of Wales |
| Rtn. Bob McDuell | | Judy | Prince of Wales |
| Rtn. Colin Millhouse | | Glenys | Prince of Wales |
| Rtn. Roger Smith | | Mavis | Prince of Wales |
| Rtn. Roy Smith | | Marsha | Prince of Wales |
| Rtn. David Weaver | | Avril | Prince of Wales |

ROTARY CLUB OF LONGTON

| | | | |
|--------------------|-----------|--------|----------|
| Rtn. John Waller | President | Sylvia | Stutelea |
| Rtn. Don Colclough | | Wendy | Stutelea |
| Rtn. Ron Osborne | | Liz | Stutelea |
| Rtn. Mark Roberts | | Kath | Stutelea |
| Rtn. Reg Wild | | Joan | Stutelea |

ROTARY CLUB OF LUDLOW

| | | | |
|------------------|--|------|--------------|
| Rtn. Harry Peach | | Jean | Caravan Park |
|------------------|--|------|--------------|

ROTARY CLUB OF MARKET DRAYTON

| | | | |
|---------------------|-----------|----------|------------|
| Rtn. Nigel Pocock | President | Margaret | Club House |
| Rtn. Richard Betham | | | Club House |
| Rtn. Roy Currell | | Pat | Club House |
| Rtn. Peter Munns | | Peggy | Club House |

ROTARY CLUB OF NEWCASTLE-UNDER-LYME

| | | | |
|---------------------|----------------------|-----------|-----------------|
| Rtn. Clive Rosiek | President | Maggie | Royal Clifton |
| Rtn. Brian Ball | | Vinnie | Royal Clifton |
| Rtn. Edwin Daniels | | Elizabeth | Royal Clifton |
| Rtn. Peter Davis | | Marina | Royal Clifton |
| Rtn. John Fallaize | | Jill | Royal Clifton |
| Rtn. Frank Hayes | | Barbara | Royal Clifton |
| Rtn. Brian Haynes | Conference Sec. | Pauline | Prince of Wales |
| Rtn. David Jones | | | Royal Clifton |
| Rtn. Ron Lucas | D.G. Nominee 1995-96 | Cynthia | Prince of Wales |
| Rtn. Frank McLaren | | Hazel | Royal Clifton |
| Rtn. Roy Manning | | Anne | Prince of Wales |
| Rtn. John Milner | | Rita | Royal Clifton |
| Rtn. John Shaw | Conference Chairman | Patricia | Prince of Wales |
| Rtn. Tom Simpson | | Kathleen | Royal Clifton |
| Rtn. John Urwin | | Pat | Royal Clifton |
| Rtn. Alan Wilkinson | | Gillian | Royal Clifton |
| Rtn. Norman Wilson | | Barbara | Royal Clifton |

ROTARY CLUB OF NEWCASTLE-UNDER-LYME—ETRURIA

| | | | |
|-----------------------|-----------|---------|---------------|
| Rtn. Keith Bould | President | Gillian | Royal Clifton |
| Rtn. Carl Bailey | | Sarah | Royal Clifton |
| Rtn. Philip Baker | | Dierdre | Royal Clifton |
| Rtn. Dawn Bond | | Chris | Royal Clifton |
| Rtn. David Carr | | Valerie | Royal Clifton |
| Rtn. Mike Dwyer | | | Royal Clifton |
| Rtn. Catherine George | | | Royal Clifton |
| Rtn. Leslie Jones | | Mandy | Royal Clifton |
| Rtn. Ian Mason | | | Royal Clifton |
| Rtn. Jeff Simmonds | | | Royal Clifton |
| Rtn. Goff Stevenson | | | Royal Clifton |
| Rtn. Gill Tew | | Nella | Royal Clifton |
| Rtn. Neil Whitmore | | | Royal Clifton |
| Rtn. Jim White | | Joyce | Royal Clifton |

ROTARY CLUB OF NEWPORT

| | | | |
|------------------------|------------------|---------|-----------------|
| Rtn. Alan Roberts | President | Judy | |
| Rtn. Rodney Agnew | | | Shelbourne |
| Rtn. Frank Arnold | | Gladys | Shelbourne |
| Rtn. Keith Castle | | Irene | Shelbourne |
| Rtn. Derrick Clancy | | Marie | Shelbourne |
| Rtn. Cyril Dixon | | Blanche | Shelbourne |
| Rtn. Roy Ellison | | Olive | Shelbourne |
| Rtn. Tony Evans-Fisher | | Jill | Shelbourne |
| Rtn. John Lane | | Sheila | Shelbourne |
| Rtn. Tom Maddock | Past D.G. | Joyce | Shelbourne |
| Rtn. Bill Maxwell | | Lisa | Prince of Wales |
| Rtn. Kenneth Muir | | Pat | Shelbourn |
| Rtn. Dennis Parry | District Officer | Diane | Shelbourn |
| Rtn. Reg Pitchford | | Mary | Prince of Wales |
| Rtn. Allan Wilmot | | Bett | Shelbourne |
| Rtn. John Swinn | | Joyce | Shelbourne |

ROTARY CLUB OF PENKRIDGE

| | | | |
|-----------------------|-----------------|----------|-------------|
| Rtn. David Calcroft | President | Wendy | Scarisbrick |
| Rtn. John Beeston | | Beryl | Scarisbrick |
| Rtn. Norman Cheetham | | Judith | Scarisbrick |
| Rtn. Peter Gay | Distict Officer | Susan | Scarisbrick |
| Rtn. Peter Graham | | Mary | Scarisbrick |
| Rtn. Alan Gripton | | Marjorie | Scarisbrick |
| Rtn. John Hodson | | Anne | Scarisbrick |
| Rtn. Norman Holden | | Pauline | Scarisbrick |
| Rtn. Peter McGauley | | Pamela | Scarisbrick |
| Rtn. James Richardson | | Jennifer | Scarisbrick |
| Rtn. John Rostance | | Kathleen | Scarisbrick |
| Rtn. Cliff Shore | | June | Scarisbrick |
| Rtn. Peter Skinner | | Joan | Scarisbrick |
| Rtn. Douglas Smith | | Ann | Scarisbrick |
| Rtn. Keith Summers | | Gail | Scarisbrick |

ROTARY CLUB OF RUGELEY

| | | | |
|-----------------------|-----------|-----------|-----------------|
| Rtn. Peter Shirley | President | Rosalie | Ambassador |
| Rtn. Gilbert Begent | | Lindsay | Ambassador |
| Rtn. Len Harvey | I.P.D.G. | Margaret | Prince of Wales |
| Rtn. Roger Longbotham | | Jackie | Ambassador |
| Rtn. Austin Manifold | | Elizabeth | Ambassador |
| Rtn. Ken Shuttleworth | | Vilma | Ambassador |
| Rtn. Bruce Walker | | Pamela | Ambassador |

ROTARY CLUB OF SEDGLEY & WOMBOURNE

| | | | |
|------------------------|-----------|---------|---------------|
| Rtn. George Blakey | President | Brenda | Royal Clifton |
| Rtn. Richard Garbett | | Pat | Royal Clifton |
| Rtn. David Hall | | Dorothy | Royal Clifton |
| Rtn. Byron Hooper | | Joan | Royal Clifton |
| Rtn. Graham Hoppington | | Joane | Caravan Site |
| Rtn. Sushil Obhrai | | Marlene | Royal Clifton |
| Rtn. John Pike | | Doreen | Royal Clifton |
| Rtn. Graham Rowley | | Mary | Royal Clifton |
| Rtn. Terry Wood | | Joyce | Royal Clifton |

ROTARY CLUB OF SHAWBURY & MID-SHROPSHIRE

| | | | |
|---------------------|-----------|----------|--------------|
| Rtn. Ken Morris | President | Sheila | Rosedale |
| Rtn. Geoff Charlton | | Liz | Rosedale |
| Rtn. Brian Leverton | | Margaret | Caravan Park |
| Rtn. Bob Scaiff | | Barbara | Rosedale |
| Rtn. Donald Smith | | Ann | Caravan Park |
| Rtn. Denis Williams | | Margaret | Rosedale |

ROTARY CLUB OF SHREWSBURY

| | | | |
|-------------------|------------------|-----------|-----------------|
| Rtn. John Garrard | President | Rosalind | Prince of Wales |
| Rtn. John Clayton | District Officer | Christine | Prince of Wales |
| Rtn. Barrie Davey | | Ann | Private |
| Rtn. Mike Law | District Officer | Beryl | Prince of Wales |
| Rtn. Bob Toon | District Officer | Betty | Caravan Park |

ROTARY CLUB OF STAFFORD

| | | | |
|-------------------|-----------|----------|----------|
| Rtn. John Foulkes | President | Chris | Sidbrook |
| Rtn. Eric Allen | | Ruth | Sidbrook |
| Rtn. Alan Clarke | | Kathleen | Sidbrook |
| Rtn. Roly Tonge | | June | Sidbrook |

ROTARY CLUB OF STAFFORD CASTLE

| | | | |
|----------------------------|-----------|--------------|---------|
| Rtn. Peter Mincher-Lockett | President | Jenny | Crimond |
| | | Ann Sherratt | Crimond |
| Rtn. Christopher Lee | | Rosemary | Crimond |
| Rtn. Martin Melling | | Pat | Crimond |
| Rtn. Bill Sellwood | | Viv | Crimond |
| Rtn. Geoff Smith | | Margaret | Crimond |
| Rtn. Tony Webb | | Jenny | Crimond |
| Rtn. Terry Young | | Irene | Crimond |

ROTARY CLUB OF STOKE-ON-TRENT

| | | | |
|---------------------|-----------|---------|-----------------|
| Rtn. Brian Cooke | President | Valerie | Cambridge House |
| Rtn. Paul Godfrey | | June | Cambridge House |
| Rtn. Ted Hothersall | | Pauline | Balmoral Lodge |
| Rtn. Greg Lewis | | Jean | Cambridge House |
| Rtn. David Stewart | | Celia | Cambridge House |
| Rtn. Tony Ward | | Tami | Cambridge House |

ROTARY CLUB OF STOKE-ON-TRENT SOUTH

| | | | |
|------------------------|-----------|--------|-----------------|
| Rtn. David Hunter-Rowe | President | Joan | Prince of Wales |
| Rtn. Tony Ball | | Beryl | Prince of Wales |
| Rtn. Robert Brittle | | Bryden | Prince of Wales |
| Rtn. Harry Mollat | | Jackie | Prince of Wales |
| Rtn. Fred Seabridge | | Sheila | Caravan Park |
| Rtn. Gerry Whitby | | Anne | Prince of Wales |
| Rtn. Jim Whitfield | | Pat | Caravan Park |

ROTARY CLUB OF STONE

| | | | |
|----------------------|------------------|--------|-----------------|
| Rtn. John Lockley | President | Jane | Lake |
| Rtn. John Aston | | Carol | Lake |
| Rtn. Keith Barlow | District Officer | Karren | Prince of Wales |
| Rtn. Bill Bates | | Helen | Lake |
| Rtn. Mike Dillon | | Niddy | Lake |
| Rtn. Trevor Mardling | | | Lake |
| Rtn. Ken Rogers | | | Lake |
| Rtn. David Thornton | | | Lake |
| Rtn. Martin White | | | Lake |
| Rtn. David Williams | | | Lake |

ROTARY CLUB OF TETTENHALL

| | | | |
|---------------------|-----------|--------|-----------------------|
| Rtn. Eric Johnson | President | Joyce | Briars Hall, Ormskirk |
| Rtn. David Cave | | Lynne | Briars Hall, Ormskirk |
| Rtn. Bert Finch | | Sandra | Briars Hall, Ormskirk |
| Rtn. Chris Kraushar | | Alison | Briars Hall, Ormskirk |

ROTARY CLUB OF TIPTON

| | | | |
|----------------------|-----------|------------|------|
| Rtn. Bryant Colley | President | Joyce | Bold |
| Rtn. Keith Elwell | | Pauline | Bold |
| Rtn. Tony Halford | | Jacqueline | Bold |
| Rtn. Bob Taylor | | Pat | Bold |
| Rtn. Patrick Walters | | Julie | Bold |

ROTARY CLUB OF TUNSTALL

| | | | |
|----------------------|------------------|----------|-----------------|
| Rtn. Vince Gardiner | President | Kate | Duke's Folly |
| Rtn. John Barker | District Officer | Joan | Prince of Wales |
| Rtn. Albert Brown | | Georgina | Duke's Folly |
| Rtn. Chris Caldecott | | Audrey | Duke's Folly |
| Rtn. Fred Cowley | | Doreen | Duke's Folly |
| Rtn. Gordon Fishwick | | Margaret | Duke's Folly |
| Rtn. Peter Hanwell | | Mavis | Duke's Folly |
| Rtn. Bert Hikin | | Pauline | Duke's Folly |
| Rtn. John Lockett | District Officer | Lynne | Prince of Wales |
| Rtn. Ron Marshall | | | Duke's Folly |
| Rtn. Doug Schofield | | | |

ROTARY CLUB OF UTTOXETER

| | | | |
|---------------------|-----------|----------|--------------|
| Rtn. Roy Harvey | President | Sheila | Caravan Park |
| Rtn. David Sargeant | | Margaret | Caravan Park |

ROTARY CLUB OF WALSALL

| | | | |
|---------------------|------------------|-----------|-----------------|
| Rtn. John Rostill | President | Jean | Belgravia |
| Rtn. Alan Cattell | | Barbara | Belgravia |
| Rtn. Clive Childs | | Jennifer | Belgravia |
| Rtn. Ken Draper | | Audrey | Belgravia |
| Rtn. Ron Halstead | | Edna | Belgravia |
| Rtn. Cliff Hubbard | | Pauline | Belgravia |
| Rtn. Tim Jebbett | | Pat | Belgravia |
| Rtn. Brian Lowe | | | Belgravia |
| Rtn. Roy Meller | | Enid | Belgravia |
| Rtn. Everitt Plater | District Officer | Val | Prince of Wales |
| Rtn. Bren Speed | | Elizabeth | Caravan Park |
| Rtn. David Voden | | | |

ROTARY CLUB OF WALSALL ARBORETUM

| | | | |
|----------------------|-----------|---------|-----------------|
| Rtn. Peter White | President | Brenda | Cambridge House |
| Rtn. David Fussell | | Janice | Cambridge House |
| Rtn. Bill Hill | | Janet | Cambridge House |
| Rtn. Deryck Langford | | Irene | Cambridge House |
| Rtn. James McBride | | Eileen | Cambridge House |
| Rtn. Bob Shilling | | Heather | Cambridge House |
| Rtn. Raymond Taylor | | Maureen | Cambridge House |
| Rtn. Lionel Walters | | Daphne | Cambridge House |

ROTARY CLUB OF WEDNESBURY

| | | | |
|-------------------------|------------------|----------|-------------|
| Rtn. Peter Rainsford | President | Pamela | Scarisbrick |
| Rtn. David Bliss | | Sylvia | Scarisbrick |
| Rtn. Graham Cooper | | Doreen | Scarisbrick |
| Rtn. Bill Cunningham | | Clara | Scarisbrick |
| Rtn. Malcolm Dainty | | Susan | Scarisbrick |
| Rtn. Alan Day | | Sue | Scarisbrick |
| Rtn. Keith Goode | District Officer | Ann | Scarisbrick |
| Rtn. Robin Gretton | | Maureen | Scarisbrick |
| Rtn. Keith Higginbottom | | Margaret | Scarisbrick |
| Rtn. James Hyslop | | Marjorie | Scarisbrick |
| Rtn. Robert Lawrence | | Diane | Scarisbrick |
| Rtn. Gerald Owen | | Kathleen | Scarisbrick |
| Rtn. Mike Warner | | Gill | Scarisbrick |

ROTARY CLUB OF WEDNESFIELD

| | | | |
|---------------------|-----------|----------|--------------|
| Rtn. Brian Flanagan | President | Jean | Stutelea |
| Rtn. Derek Blount | | Judith | Stutelea |
| Rtn. Geoff Bradford | | Maureen | Stutelea |
| Rtn. Stan Coe | | Jean | Stutelea |
| Rtn. Ralph Crofts | | Margaret | Caravan Park |
| Rtn. David Johns | | Brenda | Stutelea |
| Rtn. Graham Jones | | Mary | Stutelea |
| Rtn. John Kenyon | | Pat | Stutelea |
| Rtn. Kewal Krishan | | Parkash | Stutelea |
| Rtn. Shankar Verma | | Alaka | Stutelea |
| Rtn. Ray Ward | | Joan | Stutelea |

ROTARY CLUB OF WELLINGTON

| | | | |
|-------------------|--------------|---------|----------------------|
| Rtn. Elfed Jones | President | Aileen | Beaufort (Burscough) |
| Rtn. Ray Hall | | | Beaufort (Burscough) |
| Rtn. Geoff Jones | | Ann | Beaufort (Burscough) |
| Rtn. David Lanyon | | Ann | Beaufort (Burscough) |
| Rtn. Brian Mooney | | Jean | Beaufort (Burscough) |
| Rtn. Gerry Powell | RIBI Officer | Maureen | Prince of Wales |
| Rtn. Norman Quin | | Carol | Beaufort (Burscough) |
| Rtn. John Rice | | Edna | Beaufort (Burscough) |
| Rtn. Don Woolford | | Meirion | Beaufort (Burscough) |

ROTARY CLUB OF WEM & DISTRICT

| | | | |
|-------------------|-----------|--------|-------------------------|
| Rtn. John Davies | President | Hilary | Tree Tops Motel, Formby |
| Rtn. Roger Ashton | | | Tree Tops Motel, Formby |
| Rtn. Alan Denison | | Sue | Tree Tops Motel, Formby |

ROTARY CLUB OF WHITCHURCH

| | | | |
|----------------------|-----------|----------|-------------------------|
| Rtn. Brian Kimmitt | President | Rosemary | Tree Tops Motel, Formby |
| Rtn. John Bellis | | Patricia | Tree Tops Motel, Formby |
| Rtn. Don Pearce | | June | Tree Tops Motel, Formby |
| Rtn. Peter Wagstaffe | | Joan | Tree Tops Motel, Formby |
| Rtn. David Williams | | Linda | Tree Tops Motel, Formby |

ROTARY CLUB OF WILLENHALL

| | | | |
|---------------------|------------------|----------|-----------------|
| Rtn. Derek Scott | President | Kathy | The Radley |
| Rtn. Ron Foulkes | | Eunice | The Radley |
| Rtn. Keith Higgins | | Glen | The Radley |
| Rtn. Alan Jewkes | | Arlene | The Radley |
| Rtn. Tom Longstaffe | District Officer | Millie | Prince of Wales |
| Rtn. Trevor Roberts | | Judith | The Radley |
| Rtn. Adrian Rowley | | Patricia | The Radley |
| Rtn. Derek Squire | | Edna | The Radley |
| Rtn. Les Williams | | Mary | The Radley |
| Rtn. Reg Wrighton | | Anne | The Radley |

THE ROTARY CLUB OF WOLSTANTON

| | | | |
|----------------------|-----------|----------|---------------|
| Rtn. Robert Birchill | President | Pauline | Royal Clifton |
| Rtn. Geoff Adams | | Audrey | Royal Clifton |
| Rtn. Arnie Bratt | | Margaret | Royal Clifton |
| Rtn. Ken Lockett | | Glynis | Royal Clifton |
| Rtn. John Oakley | | Jean | Royal Clifton |
| Rtn. David Stubbs | | Mary | Royal Clifton |
| Rtn. Peter Walley | | Wendy | Royal Clifton |
| Rtn. Mela Zivkovic | | Rita | Royal Clifton |

ROTARY CLUB OF WOLVERHAMPTON

| | | | |
|---------------------------|-------------------------|---------|-----------------|
| Rtn. Alan Walters | President | Carol | Bold |
| Rtn. Colin Cundy | | Carolyn | Bold |
| Rtn. Gaby Di-Gianvittorio | | Pat | Bold |
| Rtn. Fraser Dukes | D.G. Nominee 1996/97 | Jean | Prince of Wales |
| Rtn. George Sidebotham | | | Bold |
| Rtn. Richard Walton | | Cherry | Bold |
| Rtn. Dr. Simon Walford | | Liz | Bold |
| Rtn. John Whitehouse | | Kay | Bold |
| Rtn. Jeremy Woolridge | | Sue | Bold |

ROTARY CLUB OF THE WREKIN

| | | | |
|---------------------|-----------|-----------|------------|
| Rtn. John Warren | President | Pam | The Gables |
| Rtn. Eric Jefferson | | Elsie | The Gables |
| Rtn. Colin Lane | | Isabel | The Gables |
| Rtn. Roger Mitchell | | Tricia | The Gables |
| Rtn. Ken Wagstaffe | | Doreen | The Gables |
| Rtn. David Warner | | Maureen | The Gables |
| Rtn. John Wells | | Christine | The Gables |

ROTARACT

| | Club | Hotel |
|----------------------------------|-----------------------|-----------------|
| Allen (Troy) - District Chairman | Bilston | Prince of Wales |
| Garlick (Ian) - District Officer | Tettenhall | |
| Williams (Lisa) | Bilston | Prince of Wales |
| Jordan (Steve) - President | Bloxwich | |
| Greenwood (Rob) | Market Drayton | Adelphi |
| Pooler (Vicki) | Market Drayton | Adelphi |
| Walker (Simon) | Rugeley | Ambassador |
| Walker (Gayle) | Rugeley | Ambassador |
| Darlington (Jane) | Stone | Lake |
| Roberts (Paul) | Stone | Lake |
| Chambers (Jo) - President | Wednesfield | |
| Chambers (Peter) | Wednesfield | |

Welcome to . . .

Foundation Scholar **JULIE KAY ASHER**, B.A.Hon-Harvard, sponsored by District 6190 U.S.A. She comes from Keithville, Louisiana, and will be studying Business Administration at Keele University.

GEORGE SHORE. When the Tunstall Rotary Club visited Albania in 1992 we had the pleasure of meeting a young man named George Shore. He befriended our party, providing us with introductions to the right people, e.g. a local politician who in turn provided an armed guarded compound for our vehicles and also a meeting with the local hospital administrator where we could donate our medical supplies. George also welcomes us into his home where we were made truly welcome by his family, giving us beds and food. He travelled with us to Tirana where we were also shown great hospitality; his knowledge and confidence with the authorities made our trip so much easier.

FUTURE DISTRICT 1210 CONFERENCES :
1995
13th to 15th OCTOBER — BOURNEMOUTH

CONFERENCE OFFICIALS

| | |
|-----------------------------------|-------------------------------------|
| <i>Chairman</i> | John Shaw (Newcastle-under-Lyme) |
| <i>Secretary</i> | Brian Haynes (Newcastle-under-Lyme) |
| <i>Sergeant at Arms</i> | Roy Aslett (Blackfriars) |
| <i>Assistant Sergeant at Arms</i> | Keith Houlston (Blythe Bridge) |
| <i>District Secretary</i> | John Clayton (Shrewsbury) |
| <i>Transport Officer</i> | Keith Goode (Wednesbury) |
| <i>Chief Steward</i> | Bob Wootton (Bloxwich) |
| <i>H.Q. Hotel Liaison Officer</i> | Ron Marshall (Tunstall) |

Stewarding duties will be carried out by the Rotary Club of Bloxwich.

THE OBJECT OF ROTARY IS :

To encourage and foster the Ideal of Service as a basis of worthy enterprise and, in particular, to encourage and foster :—

- (1) The development of acquaintance as an opportunity for Service.
- (2) High ethical standards in business and professions; the recognition of the worthiness of all useful occupations; and the dignifying by each Rotarian of their occupation as an opportunity to service society.
- (3) The application of the Ideal of Service by every Rotarian to their personal, business and community life.
- (4) The advancement of International understanding, goodwill and peace through a world-fellowship of business and professional people in the Ideal of Service.

THE FOUR-WAY TEST

Of the things we think, say and do :—

- (1) Is it the *TRUTH* ?
- (2) Is it *FAIR* to all concerned ?
- (3) Will it build *GOODWILL* and *BETTER FRIENDSHIPS* ?
- (4) Will it be *BENEFICIAL* to all concerned ?